

A3FLS INSTRUCTIONS

- ❖ PLEASE FOLLOW ALL OF THE DIRECTIONS IN THIS MANUAL CAREFULLY.
- ❖ CAUTION: ALWAYS PRACTICE SAFE FIREARMS HANDLING!
- ❖ BE SURE THAT THE FIREARM IS UNLOADED BEFORE PERFORMING ANY OF THE FOLLOWING PROCEDURES!
- ❖ BE SURE THAT THE FIREARM IS POINTED IN A SAFE DIRECTION AT ALL TIMES!

Specifications:

Flashlight - 3 watt LED

Power output - 65 lumens

Battery type - CR123A (requires 2) included

Length – 3.25 inches

Weight – 3.1 ounces

Bezel diameter – 1 inch

Body width – 1.5 inches

Switch – standard on/off switch and momentary pressure switch (both included)

Laser maximum output power – <5mW

Wavelength – 635-655nm



Mounting:

To mount your A3FLS onto your weaver rail: Grasp the unit by the MAIN BODY (3). Position the unit in front of the rail so the FLASHLIGHT BEZEL (2) is facing in the same direction as the muzzle of the firearm. Align the grooves on the A3FLS weaver mount with the grooves on the rail of the firearm. Depress the WEAVER MOUNT REALEASE TAB (5) and slide the A3FLS straight back and until the unit locks into place. Your A3FLS is now securely mounted.

Dismounting:

To dismount you're A3FLS: Grasp the MAIN BODY (3) and depress the WEAVER MOUNT REALEASE TAB (5). Slide the unit forward until it has cleared the rail on the firearm completely. Your A3FLS is now dismounted.

- ❖ **WARNING:** The A3FLS will securely mount on most weaver/picatinny rails, but not all (depending on the location of the cross-slots on the rail itself).

Switch Operation:

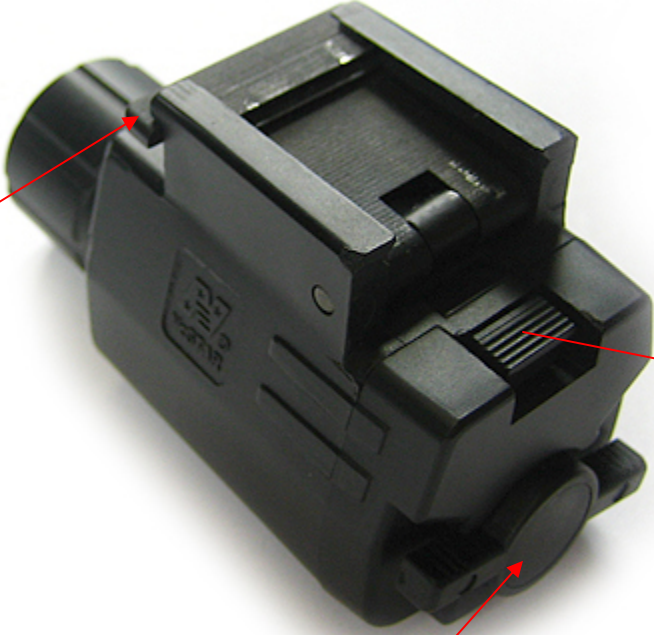
Your A3FLS is comes equipped with a STANDARD ON/OFF toggle type switch (7) (installed), and a PRESSURE SWITCH (8) (momentary type). The STANDARD ON/OFF SWITCH (7) is already installed upon your unit as soon as you open the box. To switch the light/laser ON simply turn the toggle in the counter clockwise position. To switch the light/laser OFF simply turn the toggle in the clockwise position. To use the PRESSURE SWITCH (8): First remove the STANDARD ON/OFF SWITCH (7) by pressing down on the BATTERY COVER RELEASE (6). Next, pivot the STANDARD ON/OFF SWITCH (7) down and away from the unit. Now, hold the PRESSURE SWITCH BATTERY COVER (8) at an angle with the bottom of the battery cover resting on the bottom of the BATTERY COMPARTMENT (10). Next, pivot the PRESSURE SWITCH BATTERY COVER (8) up until the BATTERY COVER RELEASE (6) engages and locks into place. Test the function of the PRESSURE SWITCH (8) by squeezing the PRESSURE SWITCH PAD (9) between your index finger and you thumb. The light/laser should illuminate when squeezed, and shut off when released. The PRESSURE SWITCH PAD (9) has an adhesive Velcro pad that can be placed on your firearm in any manner which is most comfortable for you.

Battery Replacement:

To replace the batteries in your A3FLS: First remove the battery cover by pressing down on the BATTERY COVER RELEASE (6). Pivot the cover downward and pull it away from the unit. Next, remove the old batteries and discard in a proper manner. ONLY use new CR123A type batteries when replacing the old batteries. DO NOT use a different type of battery as this may cause damage to the unit. DO NOT mix old batteries with new batteries. Slide the new batteries into the BATTERY COMPARTMENT (10), making sure that you place them into the unit in the proper direction. . Line up the positive and negative symbols (+ and -) on the batteries so they line up with corresponding marks inside of the BATTERY COMPARTMENT (10). Attach the battery cover, pivoting from the bottom (see Switch Operation), until the BATTERY COVER RELEASE (6) engages and locks into place. Test function of light/laser. If the light/laser does NOT illuminate when the switch is turned ON, check to make sure that the batteries are properly installed and that the battery cover is properly attached.

WARNING: The A3FLS is designed so that both the Flashlight and the Laser illuminate at the same time when the unit is turned on. Neither the Flashlight nor the Laser can be adjusted or focused in any way. DO NOT attempt to dismantle the A3FLS in any way as this will cause damage to the unit. NcSTAR will not be liable for any A3FLS units which have been tampered with in any way.





5. WEAVER MOUNT
RELEASE TAB

6. BATTERY COVER
RELEASE

7. STANDARD
ON/OFF SWITCH

8. PRESSURE SWITCH
BATTERY COVER



9. PRESSURE SWITCH PAD

10. BATTERY COMPARTMENT